

# Near-term CO<sub>2</sub> storage in the Dutch North Sea



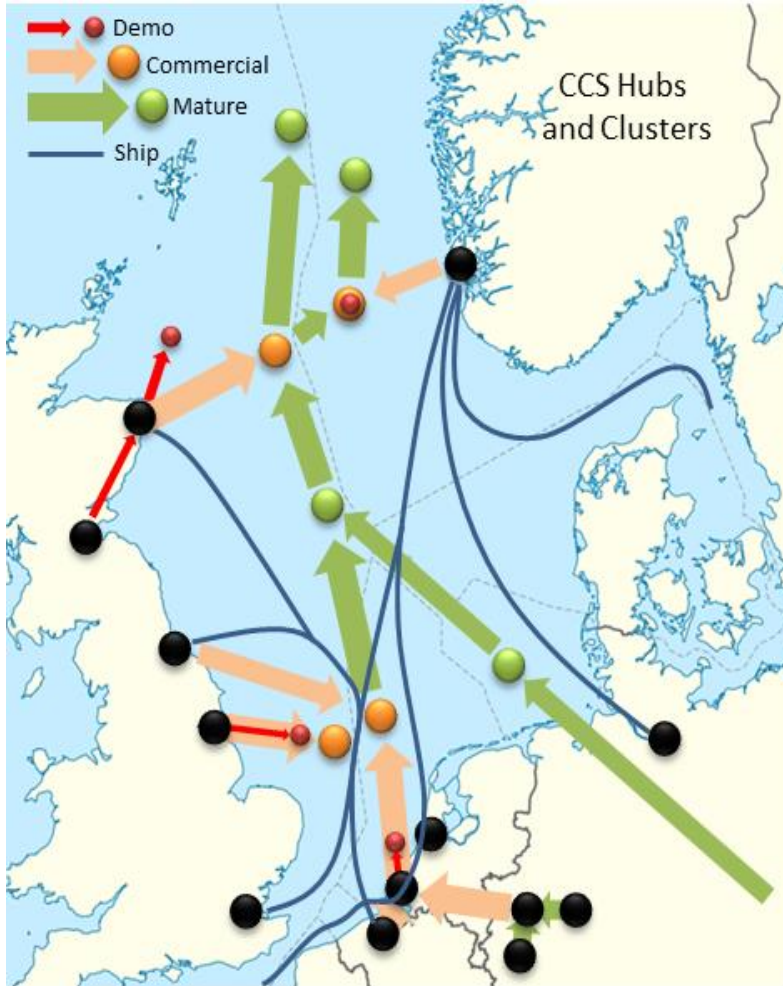
Near-  
MPP3 to P18A platform  
25km

term

- P18-4A2 well  
The clock is ticking
- Production
  - Decommissioning
  - Storage Permit

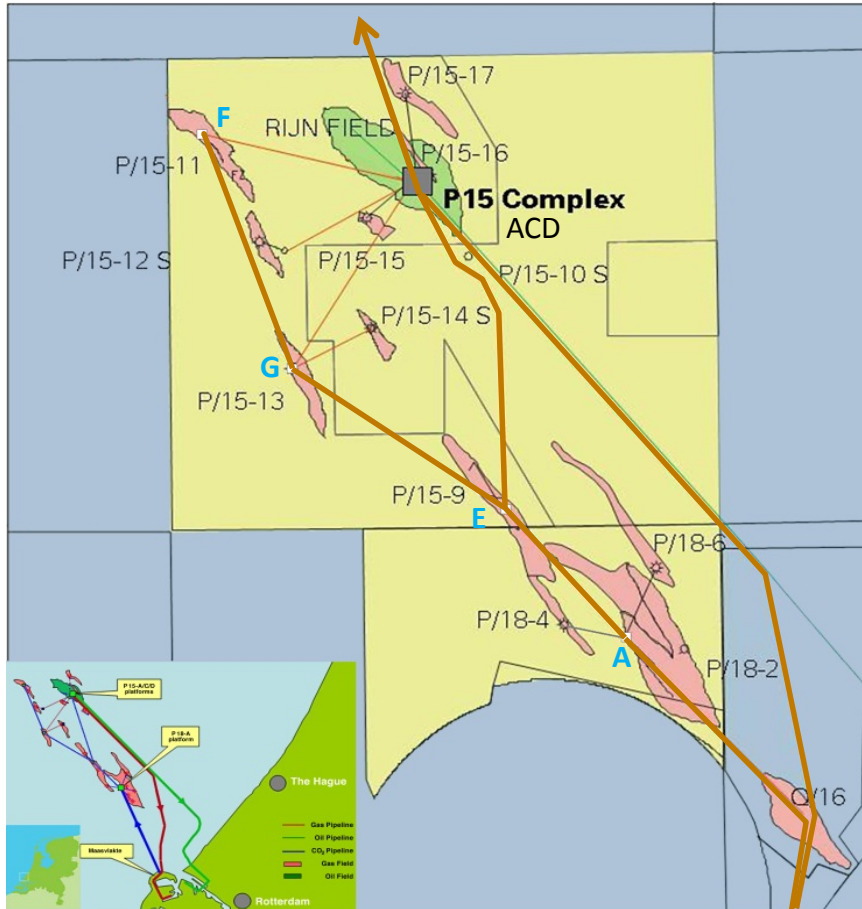


# 2050 vision or we get hot (and wet)



# 74 Mt CO<sub>2</sub> capacity in 5 depleted pressure fields

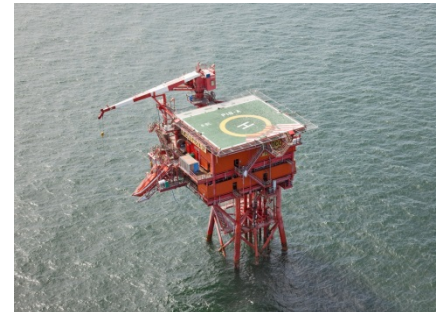
## Will it be filled by UK or NL ?



5 depleted pressure gas reservoirs available for storage

Reservoir/ Platform	Reservoir P (bar) initial	Reservoir P (bar) end 2016	CO <sub>2</sub> capacity million ton	fill order
P18-4 / P18-A	340	20	8	1
P18-2 / P18-A	355	25	32	2
P15-9 / P15-E	347	20	10	3
P15-13 / P15-G	288	35	8	4
P15-11 / P15-F	283	15	16	5

- Connect P18-A and P15-E to P15-ACD
- Reverse flow 26" gas line
- Compress CO<sub>2</sub> at P15-ACD



The potential of CO<sub>2</sub> EOR in the **RIJN FIELD** under P15-ACD needs evaluation.  
The potential of CO<sub>2</sub> storage in aquifer formations in P15 P18 needs evaluation.